

How Science Supports Creation and Not Evolution

Dr. Heinz Lycklama

heinz@osta.com

www.osta.com/messages



THE FROG PRINCE



Frog + time (instantaneous) -> Prince = Fairy Tale

Frog + time (300 million yrs.) -> Prince = Science

Dr. Gish, ICR

“What I see convinces me God exists.
What I cannot see, confirms it.”

Albert Einstein



Science, Creation and The Bible

- Science and the Scientific Method
- Origins – Creation or Evolution?
- Assumptions and Origin Models
- Which Model Best Fits the Evidence?
- Looking at the Scientific Evidence

- | | |
|---|---------------------------------------|
| 1. Origin of matter, energy, natural law | 5. Origin of life (probability) |
| 2. Classification of biological organisms | 6. The fossil record |
| 3. Mutations and natural selection | 7. Origin of solar system and planets |
| 4. Origin of man | 8. Teleology – evidence for design |

- Biblical Reliability on Science
- In Conclusion

What Is Science?

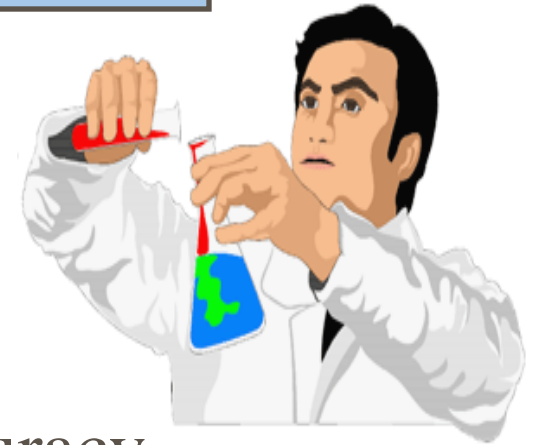
- “Science is the search for truth”
- “Operational” Science
 - Postulate theory -> make observations -> prove/falsify theory
 - Using the Scientific Method
- “Origins” Science
 - Were you there at the beginning?
 - “Forensic” science
 - Model of Creation
 - Model of Evolution
 - Which model fits the observed facts best?



For by Him (Jesus) were all things created, that are in heaven, and that are in earth. Colossians 1:16a

Scientific Methodology

- Make observations
- Develop a hypothesis or theory that explains the observations
- Conduct experiments to test accuracy and predictions made by the theory
- Draw conclusions
- Repeat experiments to verify results and eliminate sources of inaccuracy
- Report results so others can repeat the experiment(s)





Origins – Creation or Evolution?

- “Science is the search for truth”
- Hypothesis, theory, model, law, or fact?
 - Fact – proven to be true
 - Law – no known exception
 - Theory – testable, falsifiable, based on empirical findings
 - Hypothesis – provisionally explains some fact
 - Model – simplified representation of reality
- Which is Evolution? Creation?
 - A model – let’s see why ...



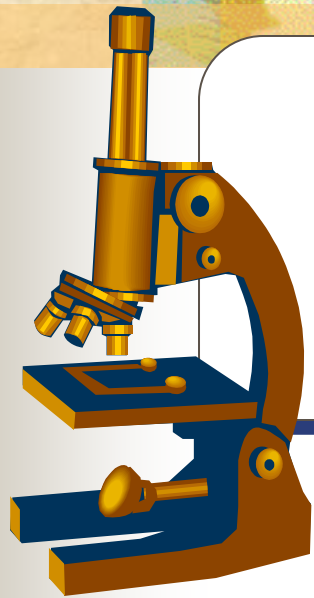
Models of Origins

- We can neither observe nor repeat “origins”
- Origins “theories” cannot be tested or proven
- We have two models (not theories) of origins
 - Creation and Evolution
- Models can be compared as to their respective capacities for correlating observable data
- Evolutionists regard Evolution as “a proven fact”
 - They believe that Evolutionism is science and that Creationism is religion
 - Evolutionists are unable to prove Evolution
 - Thousands of scientists believe in Creation



Origins Cannot Be “Proved”

- Creation cannot be “proved”
 - Not taking place now (completed)
 - Not accessible to use of scientific method
 - Can’t devise experiment to describe Creation process
- Evolution cannot be “proved”
 - If it is taking place, operates too slowly to measure
 - Transmutation would take millions of years
 - The scientific method cannot be used to measure it
 - Small variations in organisms (observed today) are not relevant
 - Can’t be used to distinguish between Creation & Evolution



**Present +
Repeatable +
Observable =
SCIENCE**

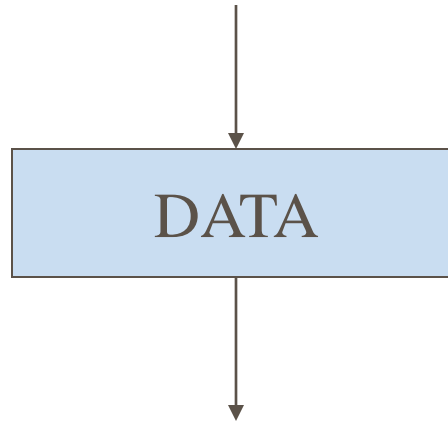
**Past +
Non-Repeatable +
Eyewitness Account =
HISTORY**



**Past +
Non-Repeatable +
No Eyewitnesses =
BELIEF**

How Our Thought System Works

Assumptions (held by faith)



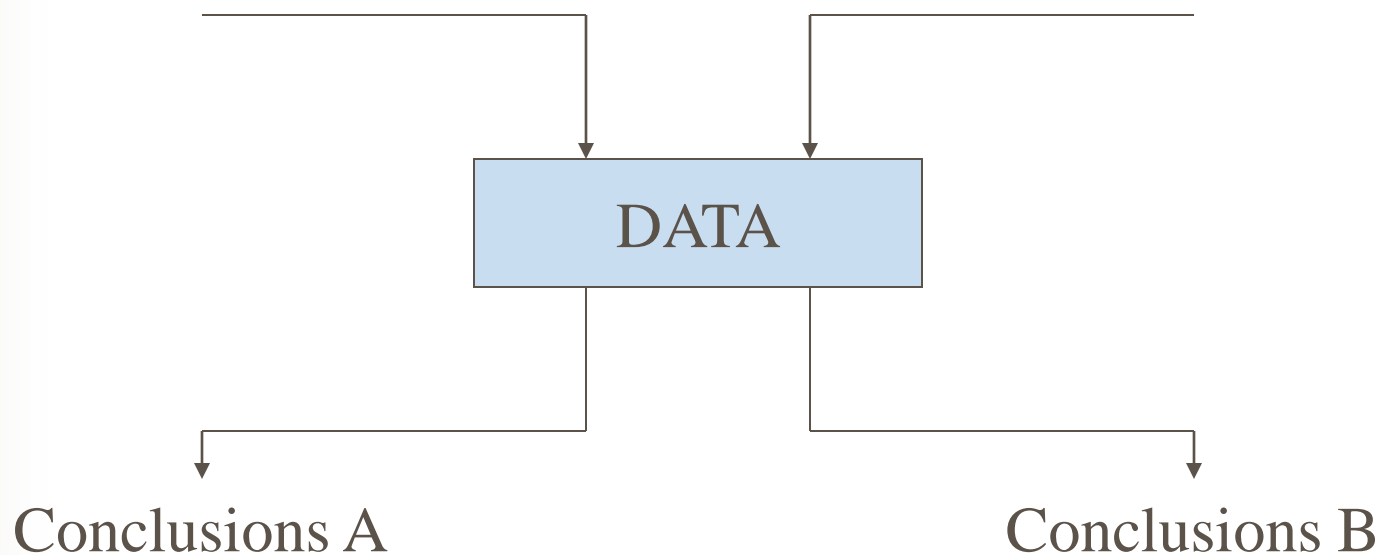
Conclusions

Logical thought is the means by which we draw conclusions from the facts/data after starting with certain assumptions.

Applying This Thinking To The Creation/Evolution Controversy

Assumptions A

Assumptions B



The Impact of Assumptions

Creator Can Act

No Creator Allowed

GODISNOWHERE

GOD IS NOW HERE

GOD IS NOWHERE



Two Thought Systems

■ Creator Acted

- Supernatural origins
- Purpose/design
- Miracle
- Event
- Creation

■ Creator Didn't Act

- Naturalistic origins
- Random chance
- Properties of matter
- Natural process
- Evolution



Basic Assumptions of Evolution

- Non-living things gave rise to living matter, i.e. spontaneous generation occurred (only once)
- Viruses, bacteria, plants and animals are related
- Protozoa (single-celled life forms) gave rise to metazoa (multiple-celled life forms)
- Various invertebrate phyla are interrelated
- The invertebrates gave rise to vertebrates
- Within the vertebrates the fish gave rise to amphibia, the amphibia to reptiles, and the reptiles to birds and animals
- All life originated from first living organism



The Evolution Model

- Explains origin, development and meaning of all things in terms of natural laws and processes which operate today as they have in the past
- No extraneous processes requiring an external agent (i.e. a Creator) are permitted
- The universe in all respects evolves itself into higher levels of order (particles to people), elements -> complex chemicals -> simple living systems -> complex life -> man



Basic Assumptions of Creationism

- The Bible is the inerrant Word of God
- God is Creator
- Man is created
- Man is fallen and dependent on God
- Creation is dependent on God
- God reveals Himself in Scripture (Special Revelation)
- God reveals Himself in nature (General Revelation)



The Creation Model

- Involved a process of special Creation in the beginning
- All the basic laws and categories of nature brought into existence by special creative processes which are no longer in operation today
- Distinct kinds of living matter exist today as they have existed in the past
- Processes of Creation replaced by processes of conservation



Which Model Best Fits The Facts?

- Creation and Evolution are the only two models of origins
- Both models should be considered as equal alternatives and evaluated objectively in terms of their relative abilities to correlate and explain scientific data
- **The model that incorporates the most data and has the smallest number of unresolved issues is the most likely to be true**



Looking at the Scientific Evidence

1. Origin of matter, energy and natural law
2. Classification of biological organisms
3. Mutations and natural selection
4. Origin of man
5. Origin of life (probability)
6. The fossil record
7. Origin of the solar system and planets
8. Teleology – evidence for design



1. Origin of Matter, Energy & Natural Law

- Evolution model predicts:
 - Matter, energy and laws may still be evolving
 - May have evolved in the past since there is no external agent to bring evolution to a stop
 - Systems can evolve to higher levels of complexity
- Creation model predicts:
 - Basic laws would not now be changing
 - Fundamental nature of matter and energy would not now be changing
 - Finished in the past, conserved in the present
 - Matter should go from order to disorder



The Laws of Nature

- Everything in the universe is bound by laws
 - Physics, chemistry, mathematics, life, logic
 - Universal constants, planetary motion
 - Laws of nature are uniform throughout the universe
 - Explain the logical orderly state of the universe
- Consequences of laws of nature
 - Laws require a law-giver
 - Laws of nature are consistent with creation
 - Laws of nature make science possible!

“ordinances of heaven and earth” Jer. 33:25



Laws of Logic

- Transcendent truths
- Depended on by the laws of nature
- Law of non-contradiction
 - Cannot have both “A” and “not A” at the same time and in the same relationship
 - God cannot contradict Himself, **Num. 23:19**
- Make reasoning possible
 - God is logical
 - Reflect God’s nature
 - Man, created in God’s image, instinctively knows the laws of logic
- Secularist cannot account for these laws



More On The Natural Laws

- The first two laws of thermodynamics are constant:
 - The total energy of any system remains the same
 - The entropy of a system increases over time
- Other constant laws include:
 - Law of gravity
 - Conservation of momentum
 - Conservation of electric charge
- Did natural laws evolve?
 - There is no evidence of this
 - Laws of nature are uniform throughout the cosmos



2. Classification of Biological Organisms

- The evolution model predicts:
 - A continuum of all forms of life
 - No classification system would work
- The creation model predicts:
 - An array of clear, but distinct organisms
 - Similar structures for similar functions, e.g. eyes
 - Different structures for different functions, e.g. gills for fish, lungs for man
 - Science of taxonomy
 - Distinct kinds/species



The Science of Taxonomy

- The science of taxonomy is a problem for evolution
- The classification system introduced by **Carolus Linnaeus** applies to plants/animals in today's world as well as to extinct plants and animals
 - A continuum of life forms does not exist
 - Intermediates have not been observed and/or identified in the fossils
 - The classification system introduced by Linnaeus still works today



Quoting an Evolutionist

- The anti-creationist, **Niles Eldredge**, wrote in 1985:
 - “And though a few of these eighteenth-century systematists had vaguely evolutionary notions, nearly all were devoutly and orthodoxly religious. They saw the order in their material, the grand pattern of similarity running through the entire organic realm, as evidence of God’s plan of creation.”

Historical Classification

Biological Classification

- **Aristotle** - first classification into animals and plants; sub-classification into “units” of cats, horses, oaks, etc.

- **Genera** (sing. **Genus**) - Latin for “groups”

- **Carl von Linné** (Carolus Linneaus; 1707-1778)

binominal taxonomy:

Each species has distinct name

Names made of *Genus plus species name*; *Homo sapiens*

- **Taxonomic hierarchy:**

Species	<i>Apis mellifera</i> (honey bee)
Genus	<i>Apis</i>
Family	<i>Apidae</i>
Order	Hymenoptera
Class	Insecta (Hexapoda)
Phylum	Arthropoda



Classification Observations

- What we do see is:
 - Variations within species, e.g. varieties of cats, dogs, cows, horses, mankind
 - No new kinds produced
 - Some species become extinct
 - Like begets like
 - Cambrian fossils reflect today's classification system

Chalk up another one for the Creation Model!



3. Mutations & Natural Selection

- Evolution model predicts:
 - Small variations between members of a species would confer differing degrees of advantage or disadvantage in the struggle for existence
 - Those with significant advantages would be favored
 - New and higher types of organisms would emerge
 - A mutation (structural change in a gene) is the source of genetic variation
 - Mutations are primarily beneficial



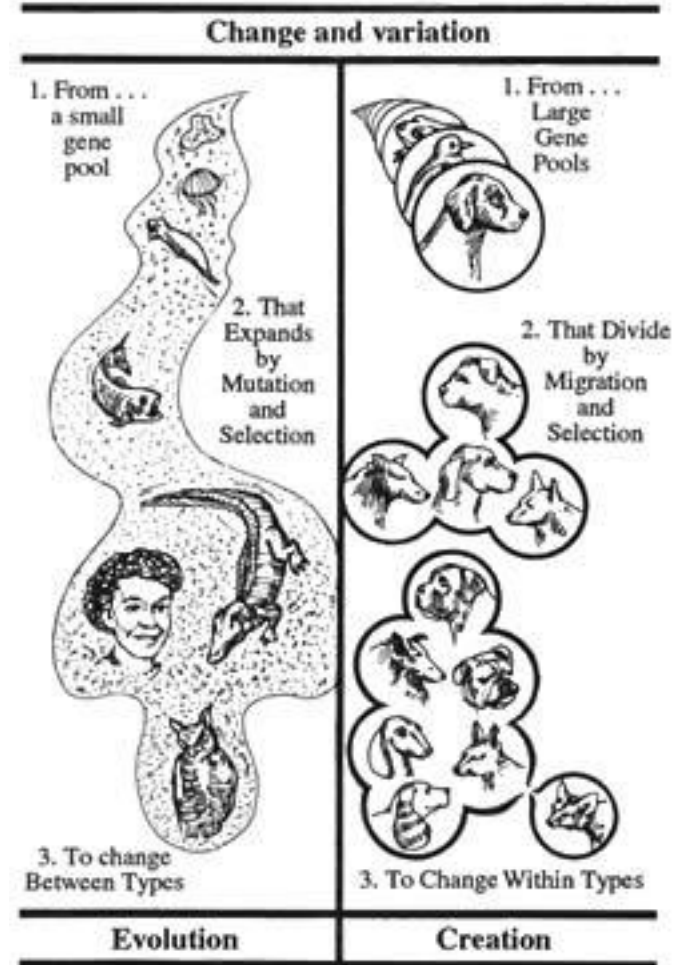
Mutations & Natural Selection - 2

- Creation model predicts:
 - Variation and natural selection work to assure genetic integrity and to enable the organism to survive in nature
 - Characteristics can be adjusted, within limits, to changes in the environment
 - Mutations are primarily harmful

Change and Variation

What is the more logical inference from our observations?

1. Unlimited change from one kind to another? (Evolution)
2. Limited variation within kinds? (Creation)



Changes Over the Years?

- 25-million-year-old termite fossils in amber
 - Identical to termites living today
- Darwin predicted that fossils would show changes in fossil record over the years
- “It has become abundantly clear that the fossil record will not confirm this part of Darwin’s predictions.”
 - **Niles Eldredge**, Paleontologist





What We See Happening Today

- Variations within a kind, e.g. peppered moth “evolving” to darker color as tree trunks grew darker with pollutants during industrial revolution
- Adaptation to the environment for survival
- Mutations are harmful to the organism
- Mutations are random and not directed
- Mutations are rare in occurrence
- Mutations almost always generate misfits which soon die out



“Origin of Species” Never Observed

- All of Darwin’s evidences turn out to be descriptions of creative adaptation, not origin
- According to **Niles Eldridge** (1986):
 - “Darwin, it is now become commonplace to acknowledge, never really addressed the ‘origin of species’ in his book of that title.”
 - Darwin never really cited the origin of a new species by natural selection
- The British evolutionist **Colin Patterson** noted:
 - “No one has ever produced a species by mechanisms of natural selection. No one has ever gotten near it and most of the current argument in neo-Darwinism is about this question.”

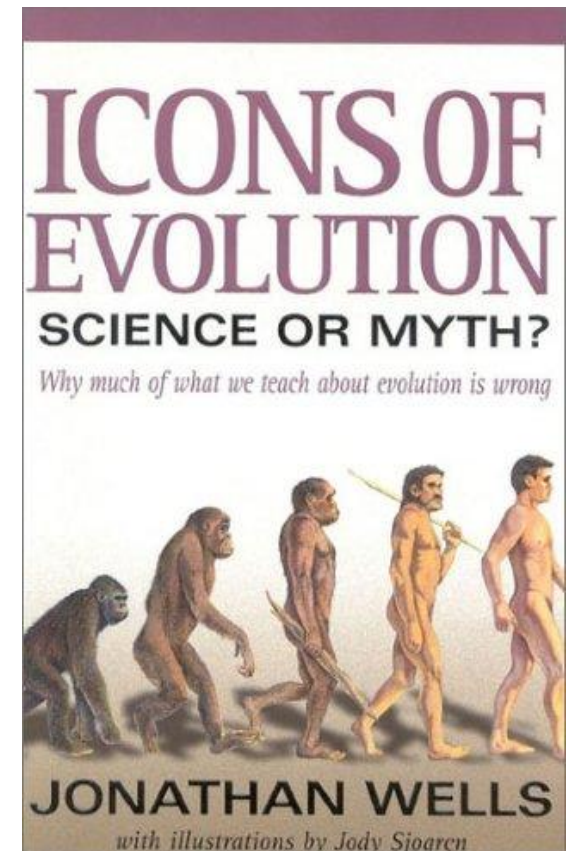


On Mutations & Natural Selection

- The philosopher **Janus Koestler** noted that:
 - “The public continues to believe that Darwin provided all the relevant answers by the magic formula of random mutations plus natural selection - quite unaware of the fact that random mutations turned out to be irrelevant and natural selections a tautology.”
- Mutations turn out to be rare events, and most of those are bad
 - They do not lead to improvements in the species, as evolution predicts

4. The Origin of Man

- Evolution model predicts:
 - Molecules -> man
 - Man evolved from an ape-like ancestor
- Creation model predicts:
 - Man's appearance has remained largely the same





Famous “Hominid” Fossils

- Neanderthal Man – 1856
- Java Man – 1891
- Piltdown Man – 1908
- Nebraska Man – 1922
- Ramapithecus – 1930
- Lucy - 1974

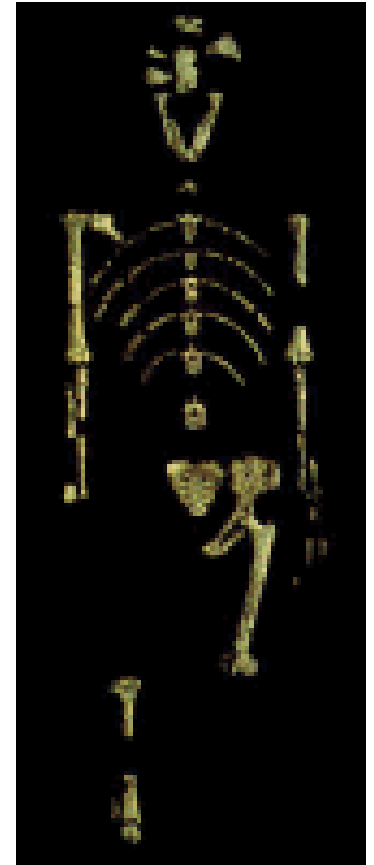
Neanderthal Man



- Fossil fragments first found in France – 1856
 - Skull cap and some limb bones
 - Diagnosed as human with deformed vertebrae
- Neanderthal Man's Site in Krapina, 1899-1999
- Another almost complete skeleton found in 1908
 - Reconstructed by Marcelle Boule to look ape-like
 - Based on pre-conceived evolutionary notions
 - Faulty reconstruction recognized in 1957
- Neanderthal is now known to be fully human with a bone deformity
 - School textbooks still portray as man's ancestor

Lucy

- Discovered in 1974 by Donald Johanson
 - 40% complete skeleton
 - Dated at 3.5 million years old
- Evidence:
 - Arm/leg ratio of 83.9 %
 - Hip/pelvis – walked upright
 - Knee joint – walked upright
- Observations:
 - Fingers long and curved (for climbing)
 - Shoulder blade like gorilla
 - Brain size of chimpanzee



Lucy - Reconstructed

- Digging deeper, we find that:
 - Leg bone broken in two places and one end was crushed -> this invalidates the ratio
 - Hip/pelvis was incomplete, and thus reshaped to make it look as if it walked upright
 - Knee joint was found over one mile away and 200 feet deeper in strata from rest of bones



This is a reconstruction of the famous fossil known "Lucy", one of our oldest known ancestors. It is based on a limited and almost complete skeleton found in the Hadar region of Ethiopia by Dr. Donald Johanson. The last fossil dated to only 3.3 million years ago and is classified as *Australopithecus afarensis*. Lucy's real, actual fossil and bones presently and forever will be the focus of an upcoming MU Museum exhibition on Primate Evolution.



© 2006 Creation Curriculum, L.L.C.

- Fossil remains of two different creatures fitted to form a make-believe creature



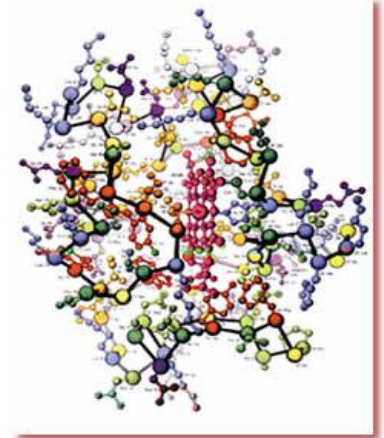
Summary of “Hominid” Fossils

- Neanderthal Man – accepted as homo sapiens
- Java Man – artificial construct
- Piltdown Man – proven to be a hoax
- Nebraska Man – an extinct pig
- Ramapithecus – an orangutan
- Lucy – make-believe creature

NO credible “ape-like -> human” fossil found!

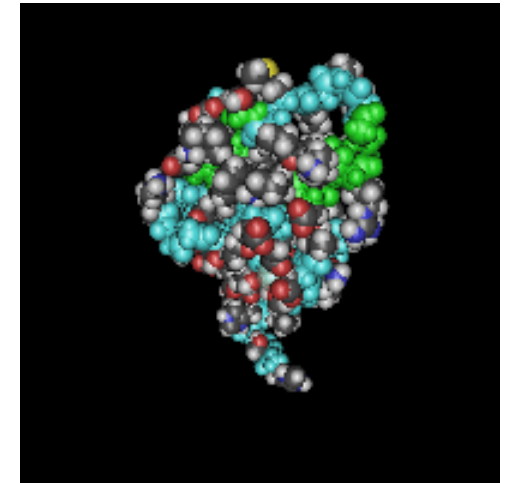
5. Origin of Life - Probability

- What is the probability that an explosion in a junk yard would “create” a car?
- What is the probability of creating a Boeing airplane from such an explosion?
- What is the probability that 200 monkeys pawing away at a typewriter could “write” a Shakespearean play?
- What is the probability of a protein coming into being by chance?



Proteins and Amino Acids

- Amino acids
 - A few thousand types
 - Right- and left-handed
- Proteins - the building blocks of life
 - Large organic molecule
 - Contain 100's to a few 1000 amino acids
 - Specified long sequences of amino acids
 - Contain 20 different left-handed amino acids
- Crucial protein fact
 - Absence, addition, or replacement of a single amino acid in the structure of a protein causes protein to be useless





Probability of Forming one Protein

- Take 200 parts and line them up in a specific order
 - 200! ways of aligning these parts = 10^{375}
 - Try a new alignment 1 billion times a second
 - Assuming 20 billion years of time, we have 20×10^{18} seconds
 - The probability of finding the right alignment is practically zero, i.e. 1 in 10^{356}
 - Anything less than 1 in 10^{50} is regarded as zero probability
- Living organisms contain many more than 200 parts
- Human being contains 60+ trillion cells
- Only 10^{80} “infinitesimal” particles in the whole universe

How Simple Can Life Be?

- Cell structure unknown by Darwin
- Smallest bacteria
 - 482 genes
 - 600 types of proteins
 - 600,000 DNA base pairs
 - Probability of chance formation is zero!
- Human genome
 - 3,000,000,000 base pairs

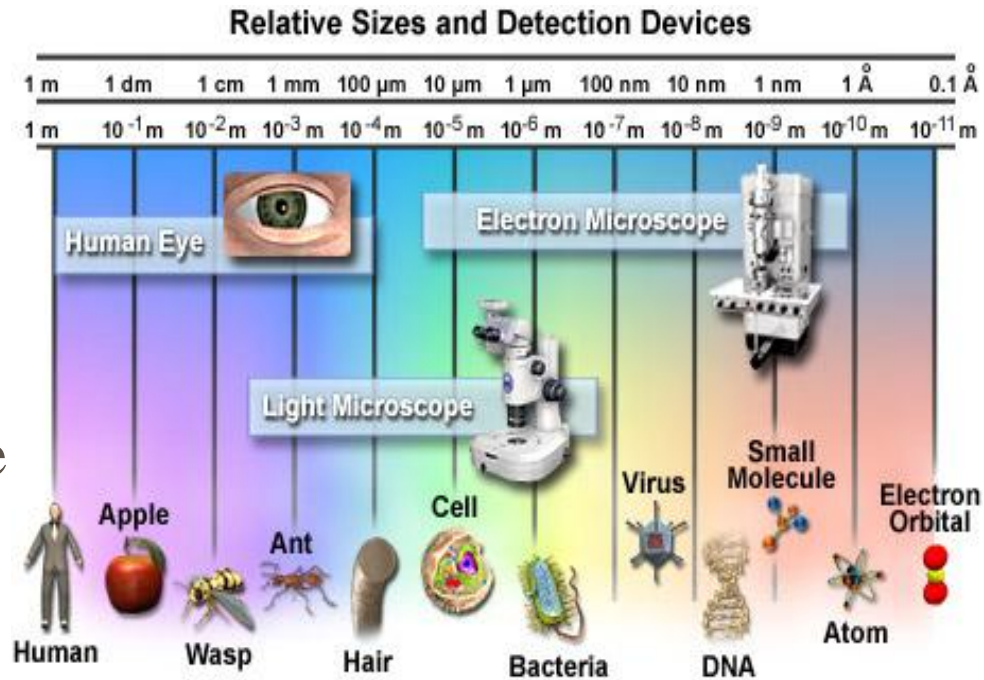


Figure 1



Spontaneous Formation of Life?

“The likelihood of the spontaneous formation of life from inanimate matter is one to a number with 40,000 noughts after it. It is big enough to bury Darwin and the whole theory of evolution. There was no primeval soup, neither on this planet nor on any other, and if the beginnings of life were not random, they must therefore have been the product of purposeful intelligence.”

Wickramasinghe, professor of applied mathematics and astronomy, UK



6. The Fossil Record

- The theory of evolution is based on two major suppositions:
 - Mutations and natural selection supposedly provided the mechanism
 - The fossil record allegedly proved the “fact” of evolution
- Fossils should “prove” evolution since the fossil record has long been considered as the main evidence for evolution
- The creation model predicts that organisms preserved as fossils will correspond to the same classification system as applicable to present-day plants and animals



Fossil Predictions

- Evolution model predicts:
 - Many preliminary forms
 - Many transitional forms
 - Randomly distributed gaps between present kinds and transitional forms
 - Basic taxonomic categories should have been evolving
- Creation model predicts:
 - No preliminary forms
 - No transitional forms
 - Clear gaps between types
 - Same taxonomic categories as at present



Fossil Record Quotes

- **Darwin** admitted in 1859:
 - “Why then is not every geological formation and every stratum full of such intermediate links? Geology assuredly does not reveal any such finely graduated organic chain.”
- **Paul Moody** wrote in a standard textbook:
 - “So far as we can judge from the geologic record, large changes seem usually to have arisen suddenly. ... fossil forms, intermediate between large subdivisions of classification, such as orders and classes, are seldom [*read never*] found.”



Expected Transitional Forms

- Evolutionists say we should find transitional forms:
 - Single cell to multi-cell creatures
 - Invertebrate to vertebrate
 - Fish to reptile
 - Reptile to bird
 - Ape to man
- To date no true transitional fossil forms have been discovered



Fully Formed

“It is considered likely that all the animal phyla became distinct before or during the Cambrian, for they all appear fully formed, without intermediates connecting one phylum to another.”

Futuyma, Douglas J. 1986. *Evolutionary biology*.
2d ed. Sunderland, MA: Sinauer Associates, Inc. p. 325.



The Fossil Record Summarized

- Missing links are still missing
- Different types of “living fossils” found
- Sudden appearance of fully formed fossils in the “Cambrian Explosion”
- The same “kinds” still appear today
- Some species are now extinct
- No new kinds evolved
- Supports the Creation Model!



7. Origin of Our Solar System

■ Predictions of evolution model:

- Origin of universe by the Big Bang
- Solar system is one of many
- Earth, moon and planets should have same composition and structure

■ Predictions of creation model:

- Solar system is unique
- Earth, moon and planets each created for a specific purpose, each with a distinctive composition and structure
- Only the earth would be found to have a hydrosphere capable of supporting life
- Only the earth would be found to have an atmosphere capable of supporting life
- Evidence of decay and catastrophism would be found on other planets and moons





Some Facts on Astronomy

- Astronomy – science dealing with study of the sun, the moon, the planets and the stars
- Solar system – sun (a star) plus eight planets
- Stars -> galaxies -> galaxy clusters
- Universe consists of ~100 billion galaxies
 - ~100 billion stars per galaxy
- Solar system is part of Milky Way Galaxy
- Andromeda, our closest galaxy is ~ 2 million light years away
- Proxima Centauri, our closest star is ~ 4.5 light years away

Galaxies



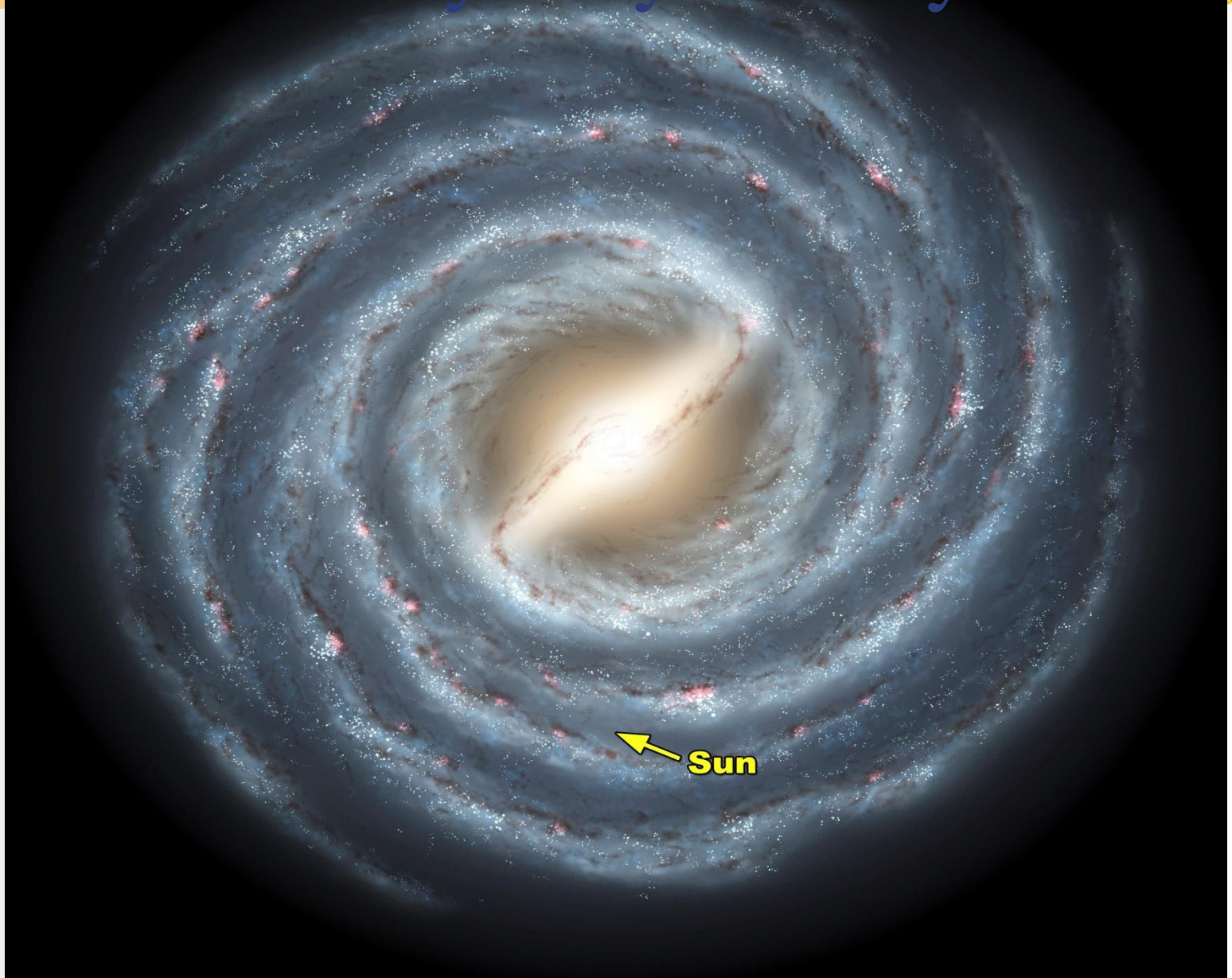
Spiral Galaxy



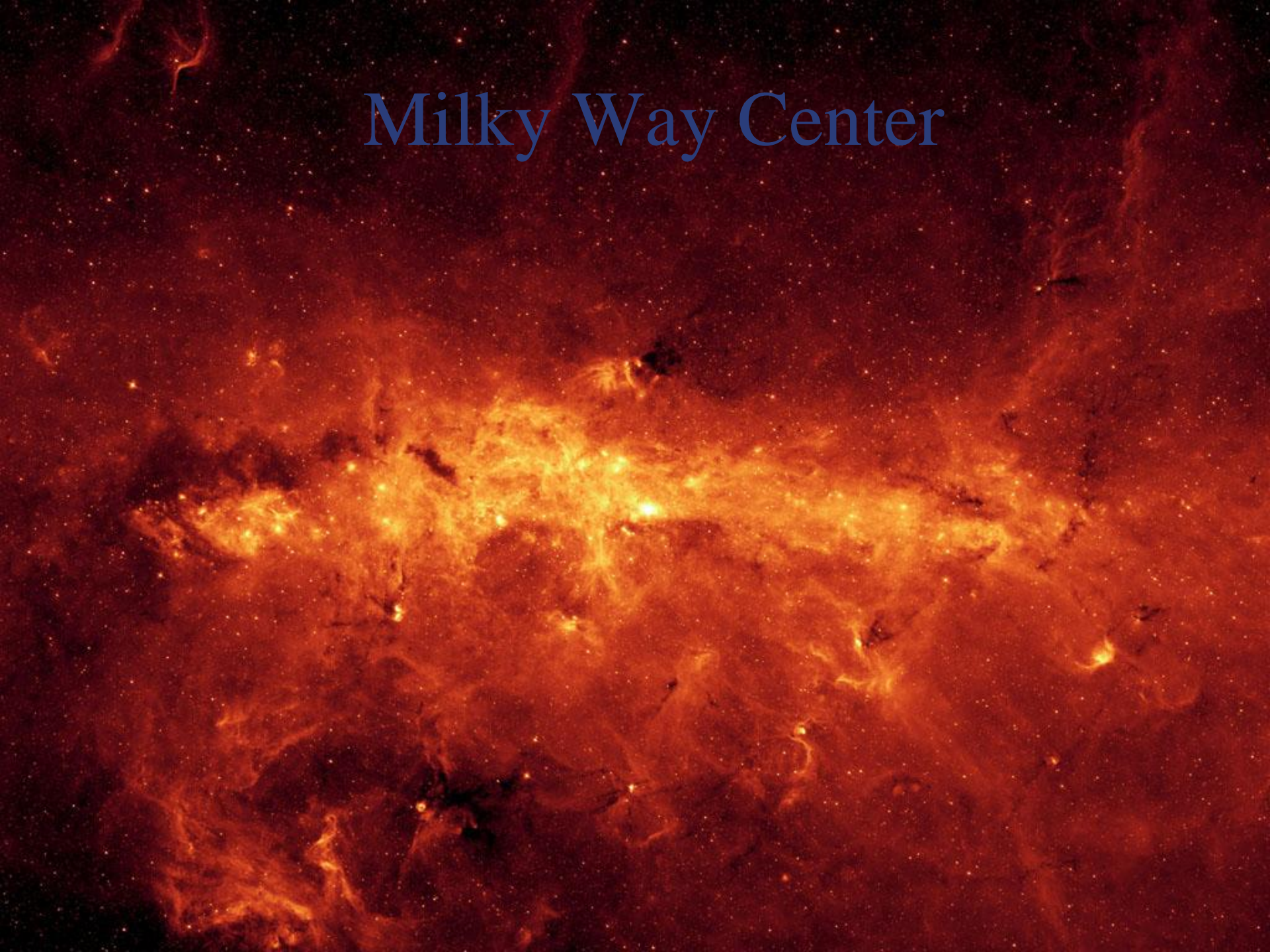
Galaxy M81



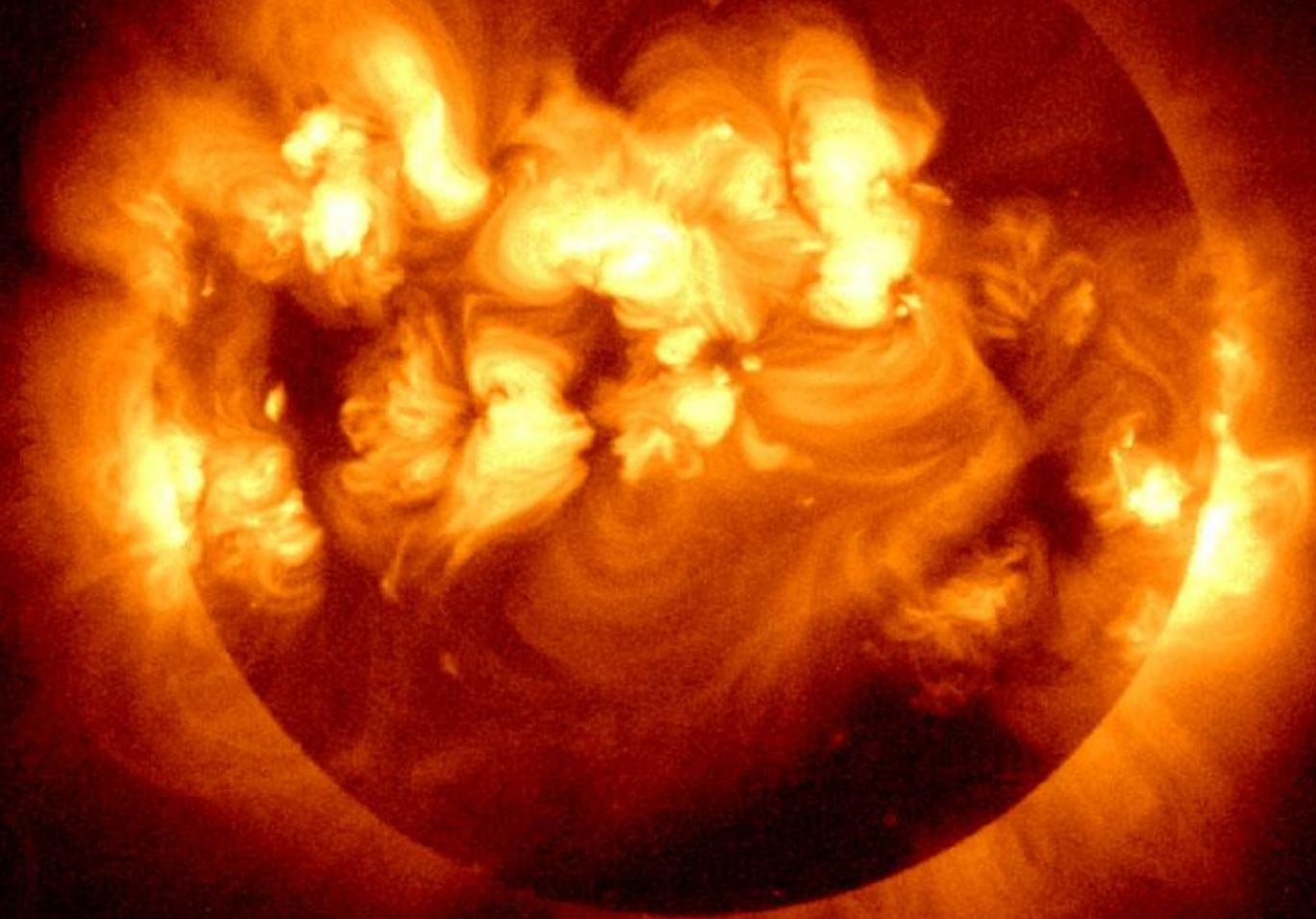
Milky Way Galaxy



Milky Way Center



Solar Flare





Big Bang Theory

- All energy and matter was crammed into a cosmic egg (or primeval atom)
 - Where did it come from?
 - How did it get there?
- Suddenly exploded/expanded at great speed
 - Nothing -> today's universe?
 - First there was nothing – then there was a Big Bang!
- Two elements were created:
 - Hydrogen (75%)
 - Helium (25%)



Big Bang Theory - 2

- These simple gases expanded
 - Perfect vacuum at very low temperature
- Everything in the universe evolved from these simple gases:
 - Stars, galaxies, solar system
 - All living things, including man with:
 - 30 trillion cells of about 200 different kinds
 - Brain with 12 billion brain cells and 120 trillion connections
- Chaos & Disorder -> Complex Universe

Chaos
&
Disorder

**BIG
BANG**

Simplicity
of H and He

EVOLUTION

**Complex
Universe**

Crab Nebula





Extra-Solar Planets?

- Solar planets
 - 4 terrestrial planets orbit close to the sun
 - 4 giant gas planets orbit farther away from sun
 - Expected to be the model for extra-solar planets
- Extra-solar planets
 - > 400 planets found orbiting other stars
 - Most detected by indirect means
 - Some “planets” may actually be brown dwarfs
 - Most are giant gas planets orbiting close to their star, even closer than Mercury to our sun



Secular Nebular Hypothesis Dead?

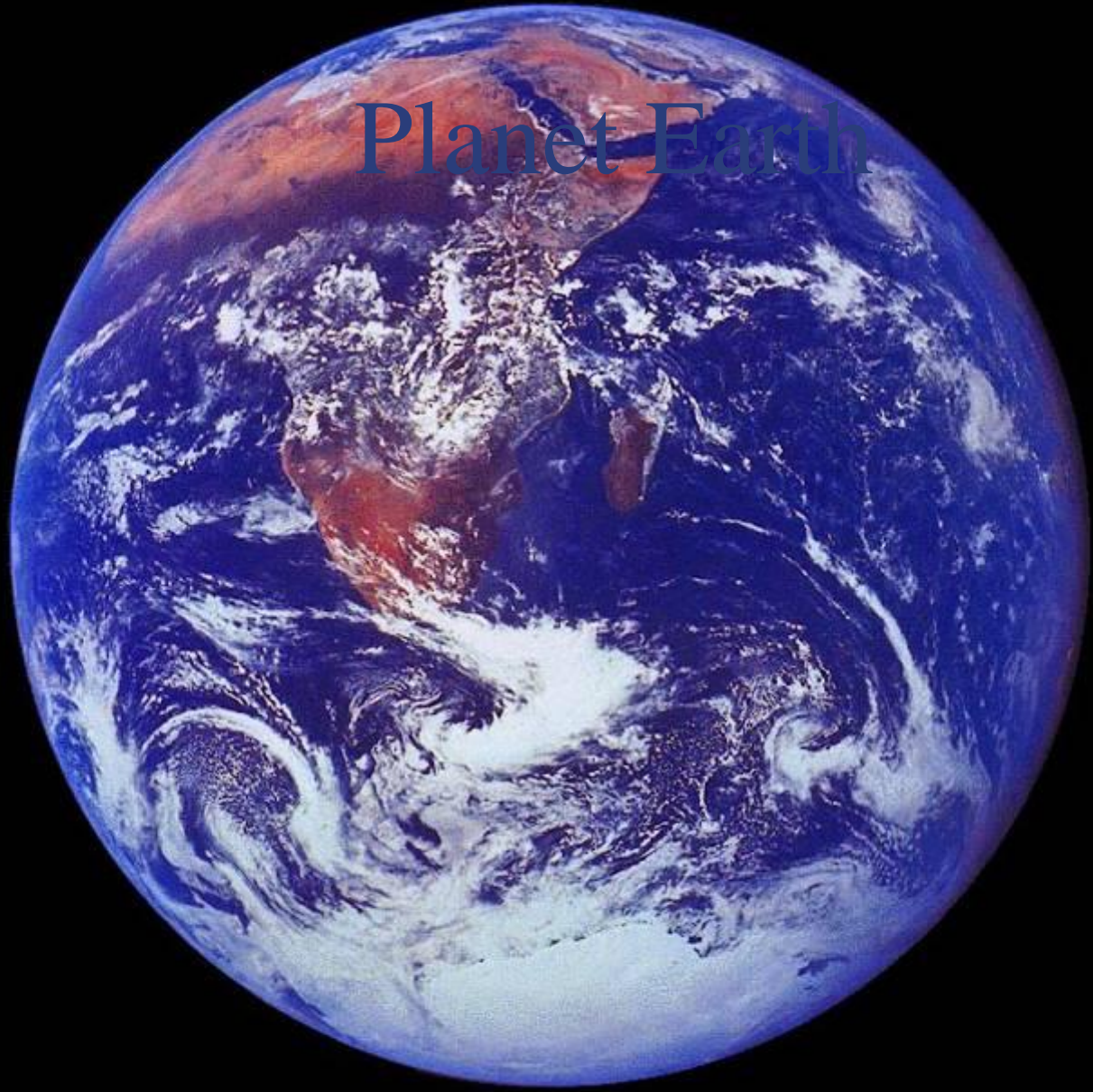
- “This new planet [orbiting Iota Horologii] adds to the suspicion that our solar system with its neat, circular, coplanar orbits, may be the exception rather than the rule”
*Extrasolar planet discoverer **Geoffrey W. Marcy**,
quoted in Science News, Vol. 156 No. 7, p. 106*
- “. . . the theoreticians, who have labored long and hard to explain how our Solar System formed . . . are greatly concerned that the new systems have very little in common with the one we live in and clearly had a radically different process of generation”
David W. Hughes, quoted in Nature, Vol. 391, p. 652
- These extrasolar planets do not fit the secular theory of formation, i.e. the Nebular Hypothesis



Solar System Evolved?

- Based on statistical analysis and the evolution model:
 - One might expect to find many solar systems with planets and similar characteristics to our solar system
 - The evolution model also assumes that the moon broke away from the earth
- What we observe:
 - Much evidence against Big Bang theory
 - Sun + 4 terrestrial planets + 4 large gaseous planets
 - 1 terrestrial planet (earth) capable of supporting life
 - Sun has 90+% of mass, planets have 90+% of angular momentum of solar system
 - Origin of moon not explainable by evolution model

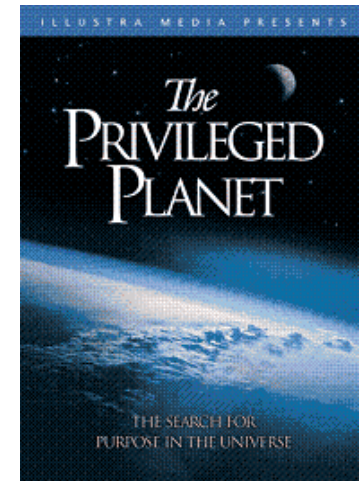
Planet Earth



The Earth is Special

The Earth is the perfect distance from the sun.
Our moon is just the right size and distance from Earth.
Our moon's gravity stabilizes the Earth's rotation.
Our position in our galaxy is just so.
Our sun is its precise mass and composition.
Our atmosphere is clear allowing investigation
of the cosmos.

All of these factors (and many more), are not only necessary for Earth's habitability; they also have been surprisingly crucial for scientists to measure and make discoveries about the universe.



The Solar System Was Created

- What we find:
 - Our solar system is unique
 - Earth and moon have different structure and composition and could not have come from the same celestial “ancestor”
 - The chemical makeup of the moon rocks is different from that of rocks on the earth
- Predictions of the creation model are exactly confirmed by moon landings and space probes



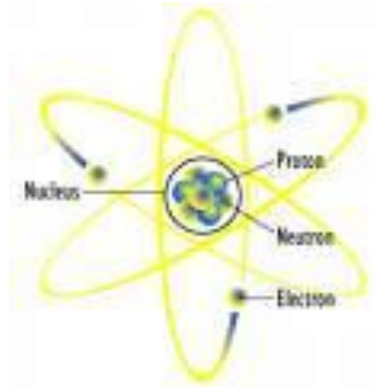


8. Teleology – Evidence of Design

- Teleology is the study of evidences of design in nature, e.g. Anthropic Principle
 - The word “teleology” is derived from the Greek word for end or purpose
- Evolution predicts:
 - Mechanistic self-ordering process in nature
 - Mutations provide random changes
 - Natural selection concentrates the beneficial features
- Creation predicts:
 - Evidence of design in nature
 - Carefully balanced equations, constants and properties of matter

The Anthropic Principle

- The Anthropic Principle states that the universe appears to be carefully designed for the well-being of mankind
- Some evidence of this found in nature:
 - Mass of proton
 - Gravitational force
 - Strength of electrical charges
 - How is total Solar Eclipse possible?
 - A “Just Right” Universe
 - > 100 precise universal constants





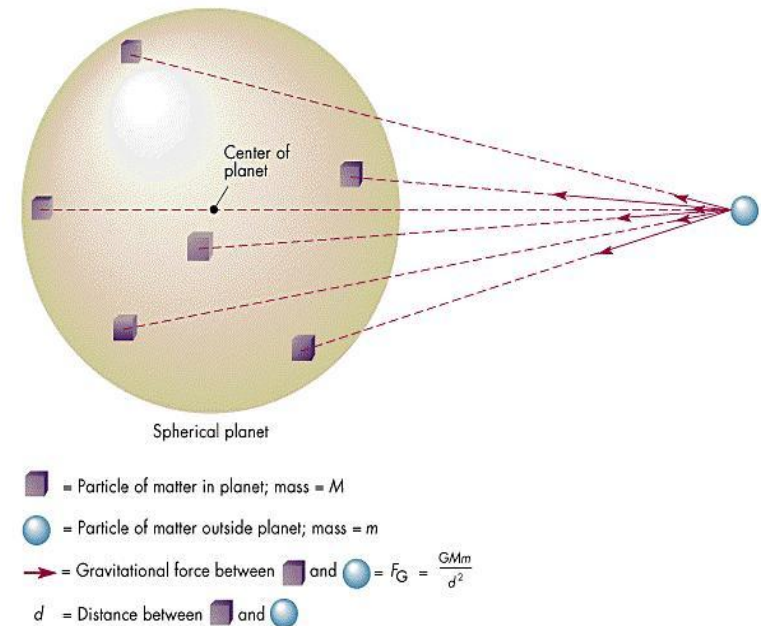
Mass of Proton

- Mass of proton is chosen for stability
- Mass of free neutron is slightly heavier than that of a proton, and it decays to a proton, electron, and an antineutrino with a half life of 12 minutes. Free neutrons cannot persist in nature.
- If the mass of a proton were increased by just 0.2 %, it would decay into a neutron, a positron and a neutrino. This decay does not occur - if it did, hydrogen could not exist. Hydrogen is the dominant element of the universe. Without it, the universe could not exist

Evidence of a precise design!

Gravitation Force

- Gravitation force is inversely proportional to the square of the separation distance between the two masses. This fundamental force holds the universe together, controlling the orbits of all members of our planetary system.
- Why is the number not 1.99 or 2.01? Any value other than 2 would lead to an eventual catastrophic decay of orbits and of the entire universe



Evidence of an essential design!



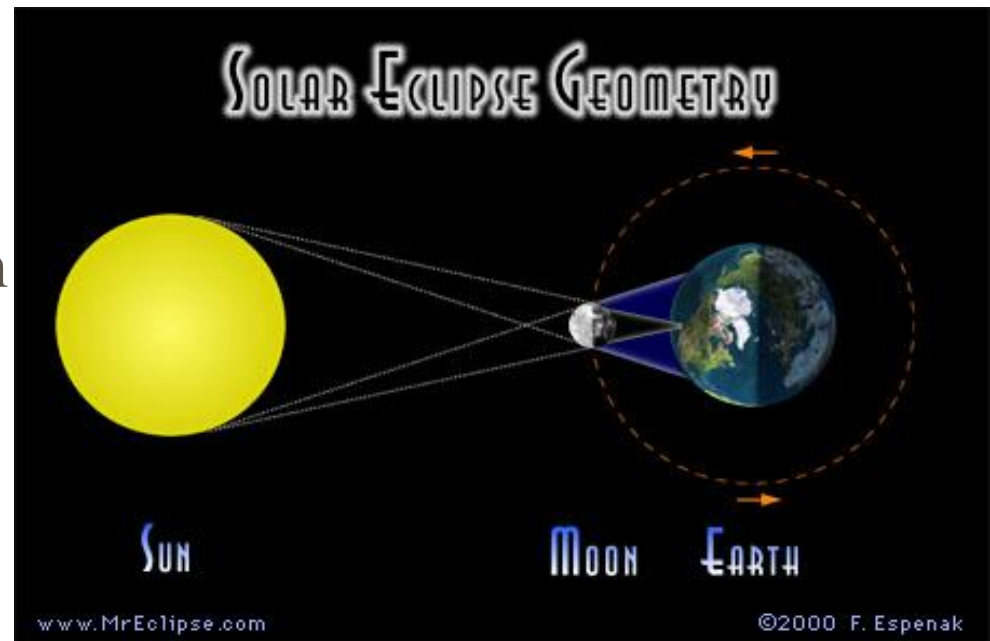
Strength of Electrical Charges

- The strength of electrical charges, i.e. the Coulomb force varies as the inverse square of the distance between the charges. Since the electrical force is much stronger than the gravitational force, it has been measured to an accuracy of 16 decimal places to be 2.0000000000000000

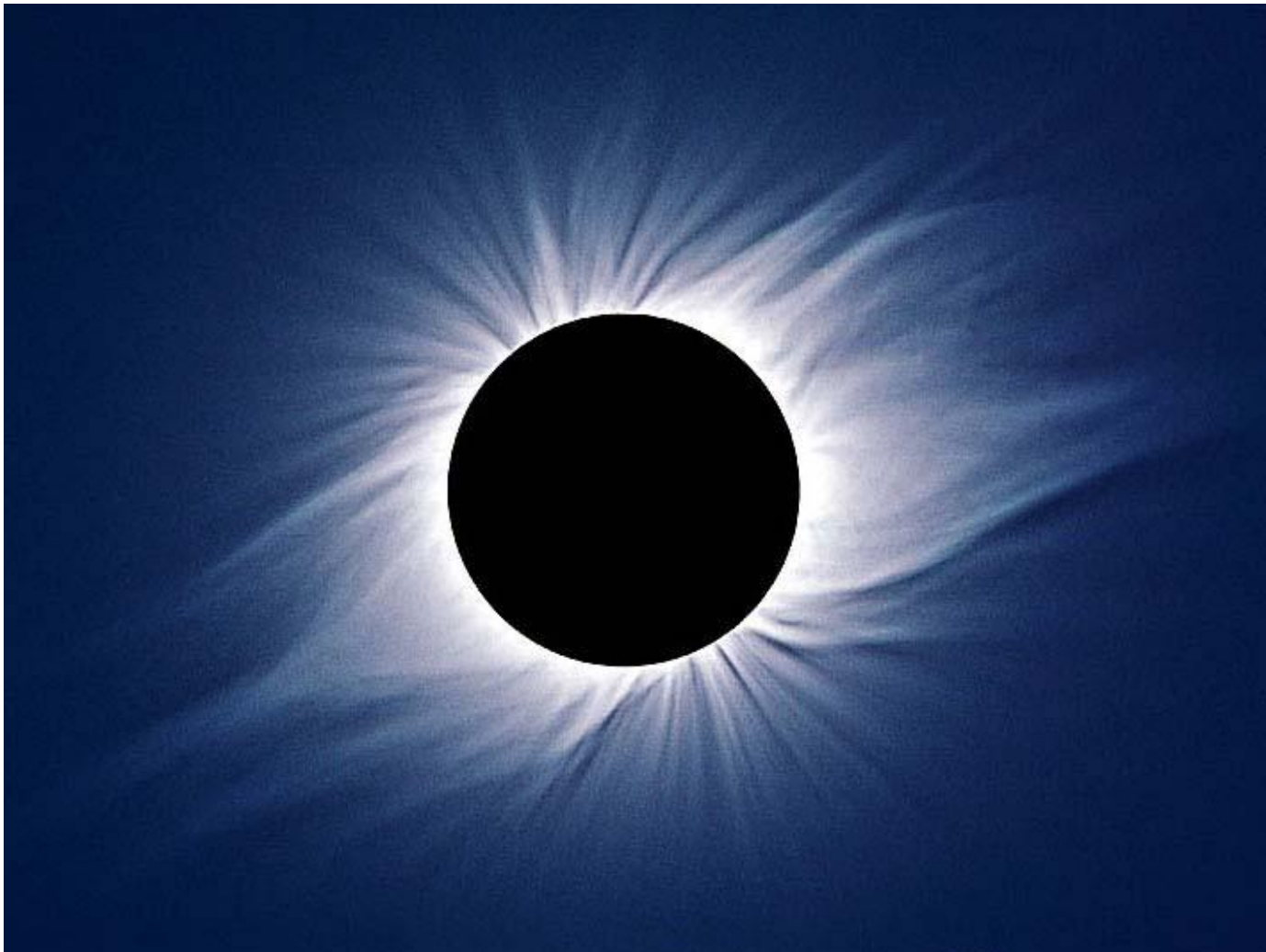
This reflects God's purposeful planning!

Total Solar Eclipse

- Sun completely obscured by moon
- Visible from narrow track on surface of earth
- Total eclipse possible because:
 - Sun's distance from earth is ~400 times moon's distance
 - Sun's diameter is ~400 times moon's diameter
- Total eclipse by design?



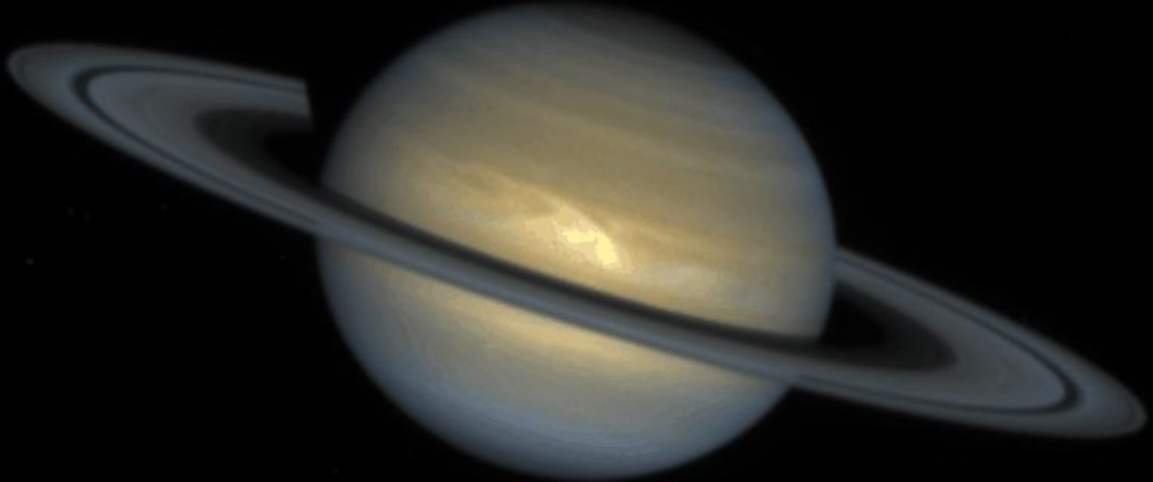
Total Solar Eclipse





Universal Fine-Tuned Parameters

- For the universe, 35+ parameters:
 - Numerical constants in equations for gravity, electromagnetism, strong and weak nuclear forces
 - Ratio of proton to electron mass
- For our galaxy, solar system, earth, 66+ parameters:
 - Distance from the sun
 - Size, temperature, & type of sun
 - Size, axial tilt, rotation speed, moon, & composition of earth
 - Stability of Saturn and Jupiter



HST · WFPC2
December 1, 1994

PR94-53 · ST ScI OPO · December 1994 · R. Beebe (NMSU), NASA

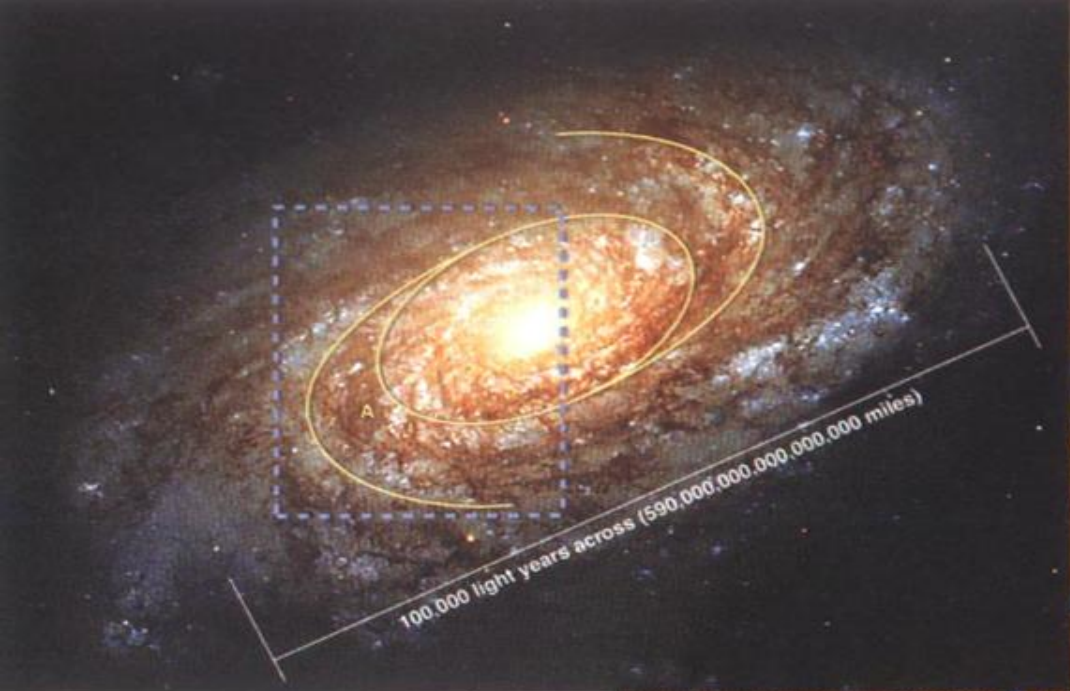
12/13/94 zgl





Jupiter's Role & Our Galaxy

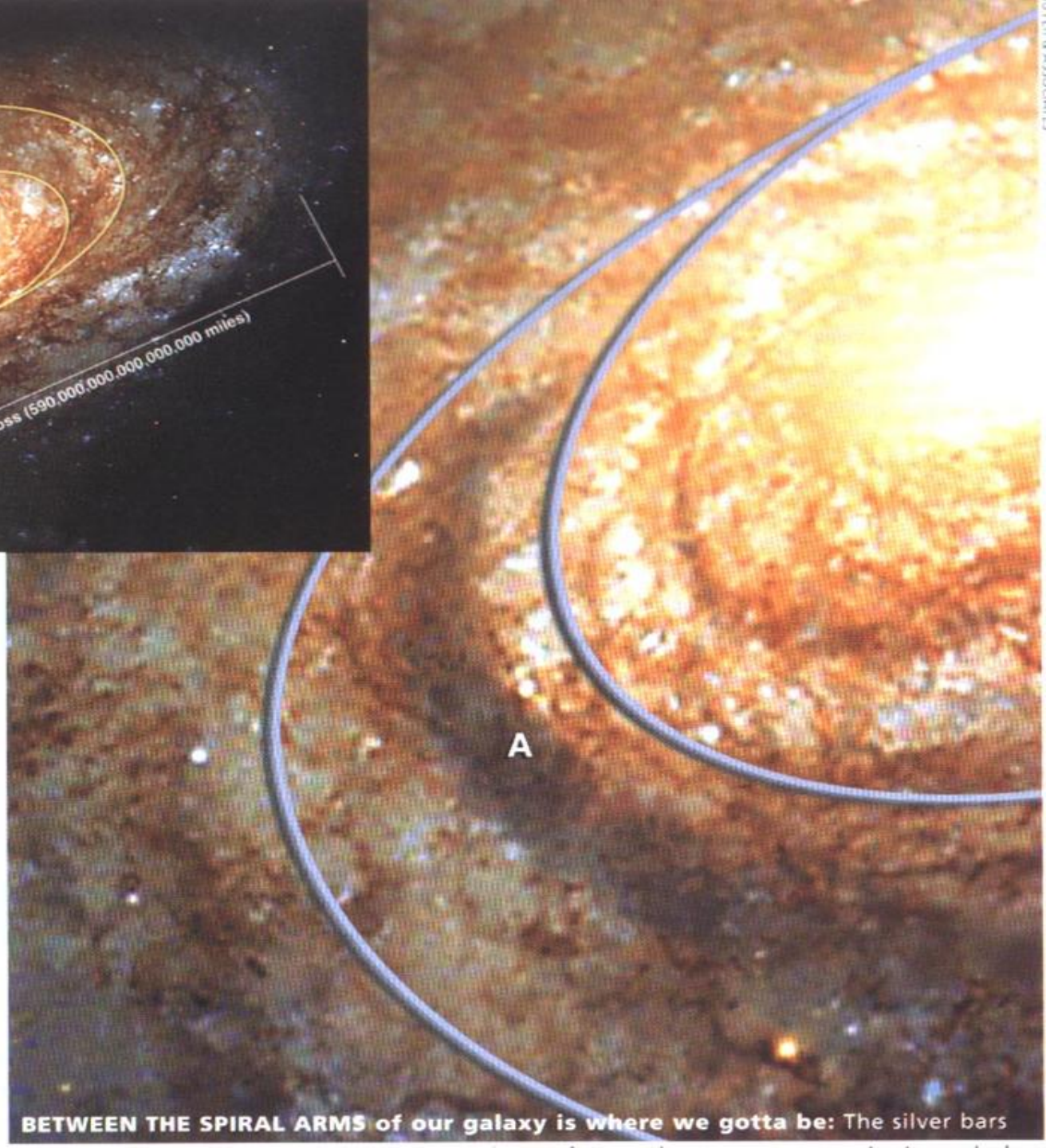
- Jupiter acts as a comet and asteroid magnet shielding earth from catastrophic collisions
- Our sun is located between spiral arms of the Milky Way Galaxy where there are fewer stars (less harmful radiation and disruptive gravity) and less gas and dust (we can see the rest of the galaxy and universe)



important for another reason. The spiral arms are loaded with gas and dust. If we were located within a spiral arm, such gas and dust would block our view of anything but the nearby stars and gas and dust clouds.

But our position *in between* spiral arms permits us to see the other parts of our galaxy and any of the other several hundred billion galaxies in the universe. That's why we can see, in King David's words, how "the heavens declare the glory of God."²

Astronomers have determined, for sure, that the heavens' message can only be read if one is sitting on a uniquely clear-viewed cosmic window



BETWEEN THE SPIRAL ARMS of our galaxy is where we gotta be: The silver bars




of Planets in the Universe?

- How Many Planets?
 - 10^{22} – Upper limit for number of stars in the universe (10^{11} galaxies x 10^{11} stars per)
 - Assume 1 planet per star
 - Therefore 10^{22} planets in the universe
- Probability of fine-tuned parameters occurring by chance:
 - For 80 fine-tuned parameters, prob. = 10^{-53}
 - For 128 fine-tuned parameters, prob. = 10^{-166}




Current Planet Search Results

- Since 1996, over 400 planets outside our solar system have been found
- Only 5% of stars have planets
- The planets are either too large, too close to their star, or with too erratic an orbit to harbor life
- Have the probabilities changed?
 - Getting smaller





“As we survey all the evidence, the thought insistently arises that some supernatural agency - or rather Agency - must be involved. Is it possible that suddenly, without intending to, we have stumbled upon **scientific proof** of the existence of a Supreme Being?” Was it God who stepped in and so providentially crafted the cosmos for our benefit?

George Greenstein



"...how surprising it is that the laws of nature and the initial conditions of the universe should allow for the existence of beings who could observe it. Life as we know it would be impossible if any one of several physical quantities had slightly different values."

- Professor Steven Weinberg
(Nobel Laureate in High Energy Physics [a field of science that deals with the very early universe], writing in the journal "Scientific American".)



A common sense interpretation of the facts suggests that a superintellect has monkeyed with physics, as well as with chemistry and biology, and that there are no blind forces worth speaking about in nature. The numbers one calculates from the facts seem to me so overwhelming as to put this conclusion almost beyond question.

Fred Hoyle,
Astronomer



What Does Evolution Say?

- Evolution is unable to deal with such permanent properties of nature
- Max Planck (1858-1947), a Nobel Prize winner and founder of modern physics, stated:
 - “According to everything taught by the exact sciences about the immense realm of nature, a certain order prevails - one independent of the human mind ... this order can be formulated in terms of purposeful activity. There is evidence of an intelligent order of the universe to which both man and nature are subservient.”

Design supports Creationism



Summary of The Evidence

- Laws of science consistent with Creationism
- Man did not evolve from ape-like creatures
- The probability of life from non-life is zero
- Abrupt appearance of fully-formed animals
- The missing links are still missing
- Catastrophism explains the “geologic column”
- Signs of intelligence in the universe
- There is NO credible evidence for Evolution!
- Science supports Creationism



Biblical Reliability on Science

- We trust the Bible for spiritual truth
- We see biblical truth in other areas
 - History - events corroborated by historians
 - Archaeology, geography – verifiable facts
- Can we trust the Bible for truth in science?
 - Astronomy, geophysics, geology, hydrology, oceanography, meteorology, biology, physics
 - Many references to nature and natural processes
 - Authors use everyday language
 - Amazingly accurate statements
 - Anticipatory scientific insights in the Bible

Astronomy – The Moon

- **Job 25:5**, “If even the moon does not shine ...”
 - The moon itself is not a source of light
 - Moon rocks filled with titanium, a better reflector than diamonds
- **Ps. 89:37**, “It shall be established forever like the moon, even like the faithful witness in the sky.”
 - The moon itself is not a source of light, but a reflector of light from the sun
- The moon is not a source of light



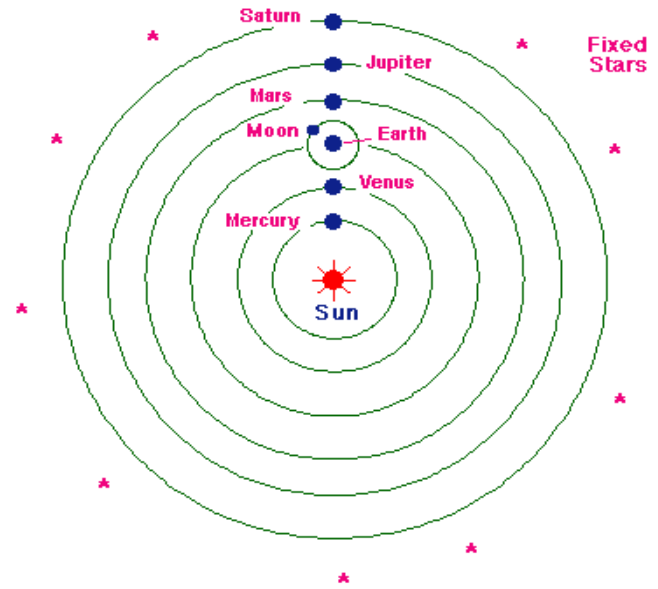
Constellations

- **Job 38:31** “Can you bind the cluster of Pleiades, or loose the belt of Orion?”
 - God told Job in ~ 2000 BC that the seven stars of Pleiades were bound together and the stars of Orion are not
 - Pleiades used to be called the “seven sisters”
 - We learned [20th century] that the stars of Pleiades are gravitationally bound and the stars of Orion are not



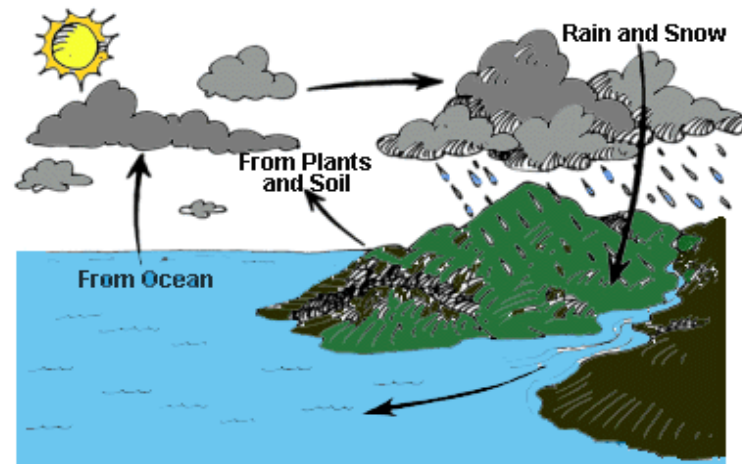
Geophysics

- **Job 26:7,10** “He stretches out the north over empty space; He hangs the earth on nothing. ... He drew a circular horizon on the face of the waters, at the boundary of light and darkness.”
 - Indicates a round earth, not resting on a pillar, consistent with observation
 - Written at a time when many thought the earth was flat



Hydrology

- **Eccl. 1:7**, “All the rivers run into the sea, yet the sea is not full; to the place from which the rivers come, there they return again.” [*Written by Solomon in 935 B.C.*]
 - The hydrologic cycle has been understood by man only in recent years -> ~ mid-1800’s
 - World’s food supply is made possible by the distribution of water
- **Is. 55:10**, “For as the rain comes down and the snow from heaven, and do not return there but water the earth, and make it bring forth and bud, that it may give seed to the sower and bread to the eater.”
 - Hydrologic cycle





Oceanography

- Ps. 8:8, “The birds of the air, and the fish of the sea that pass through the paths of the seas.”
- Matthew Maury undertook research project based on this Scripture verse (1841-1861)
 - There are paths in the sea
 - Also aware of “wind circuits” in **Eccl. 1:6-7**
 - Concluded that there must be “currents in the ocean”
 - Plotted wind circuits and ocean currents as an aid to navigation of the seas

Maury and Oceanography

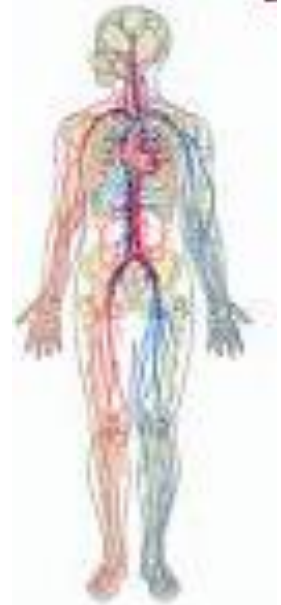
- Gulf stream is a “path in the sea”
 - 40 miles wide, 2000 feet deep
 - Flows from Gulf of Mexico up through the Atlantic
 - More paths in the sea discovered since
- Monument erected in Maury’s home state of VA

“Matthew Fontaine Maury, Pathfinder of the Seas, the Genius Who First Snatched from the Ocean and Atmosphere the Secret of Their Laws. His Inspiration, Holy Writ, Psalm 8:8, Psalm 107:23-24, and Ecclesiastes 1:6.”



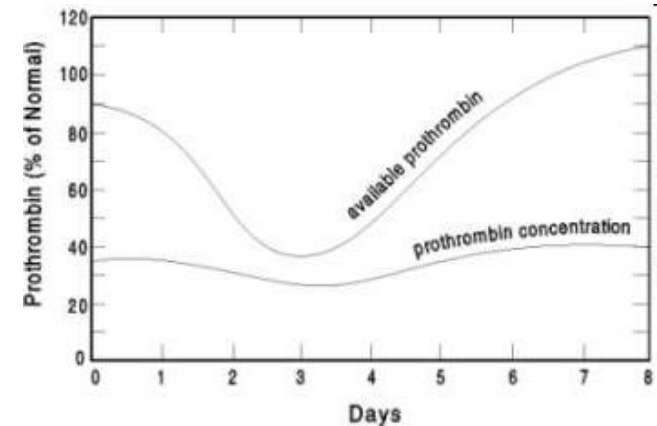
Circulatory System

- **Gen. 9:4** “Only you shall not eat flesh with its life, that is, its blood.”
 - Life is in the blood, a medical statement
 - Blood circulatory system, and importance of blood to life, were scientifically discovered by William Harvey in 1616 AD
- **Lev. 17:11,14** “For the life of the flesh is in the blood ...”, “For as for the life of all flesh, its blood is identified with its life.”
 - Written by Moses ~ 1400 BC.
 - Blood circulation, life in the blood
 - Used to “bleed” a patient to remove a disease



The Immune System

- **Gen. 17:12**, “He who is eight days old among you shall be circumcised, every male child in your generations, he who is born in your house or bought with money from any foreigner who is not your descendant.”
 - Eighth day is the only day in the entire life of the newborn that the blood clotting element prothrombin is above 100%
 - Medical science has discovered that this is when the immune system is at its peak





In Conclusion

- Science supports Creationism
 - There is NO credible evidence for Evolution!
- The Bible is reliable when it speaks on science
- The Bible is unique
 - Written over 1500+ years
 - Written on three continents in three languages
 - 40 different authors
 - Accurate in history and geography
 - Confirmed by archaeology/manuscript evidence
 - Confirmed by fulfilled prophecy
 - Reliable when it touches on science



**Thank you
for your
attention!**

Dr. Heinz Lycklama

heinz@osta.com

www.osta.com

www.osta.com/creation



More Information

- ICR – Institute for Creation Research
 - www.icr.org
 - Acts and Facts articles on Creation
- Answers in Genesis
 - www.answersingenesis.org
 - Books, seminars, articles on Creation
- Creation Research Society
 - www.creationresearch.org
 - Publication of peer-reviewed creation articles
- Dr. Heinz Lycklama's Lectures
 - www.osta.com/creation
- True Origin Archive
 - www.trueorigin.org
 - Exposing the myth of evolution



Creation Organizations

- ICR – Institute for Creation Research
 - www.icr.org
 - Books by Henry Morris (founder), e.g.
 - The Genesis Flood
 - The Genesis Record
 - The Modern Creation Trilogy
 - Acts and Facts articles on Creation
- Answers in Genesis
 - www.answersingenesis.org
 - Founded by Ken Ham
 - Books, seminars, articles on Creation



Creation Organizations - 2

- Creation Evidence Museum
 - www.creationevidence.org
 - Dinosaurs and human tracks
- Creation Moments
 - www.creationmoments.com
 - Radio spots
- Creation Research Society
 - www.creationresearch.org
 - Publication of peer-reviewed creation articles



Creation Organizations - 3

- Center For Scientific Creation
 - www.creationscience.com
 - “In The Beginning” Book by Walt Brown, Ph.D.
- Creation Science Evangelism
 - www.drdino.com
 - Videos, seminars
- Discovery Institute
 - www.discovery.org
 - Intelligent Design “Think Tank”



Important Books

- The Genesis Record, Dr. Henry Morris
- The Genesis Flood, Dr. John Whitcomb & Dr. Henry Morris
- The Collapse of Evolution, Scott Huse
- The Lie: Evolution, Ken Ham
- Refuting Evolution, Dr. Jonathon Sarfati
- Evolution: The Fossils Still Say No!, Dr. Duane Gish
- Scientific Creationism, Dr. Henry Morris
- Starlight and Time, Dr. Russell Humphreys
- Dinosaurs by Design, Dr. Duane Gish



More Important Books

- The Young Earth, Dr. John Morris
- Science and the Bible, Dr. Henry Morris
- Tornado in a Junkyard, James Perloff
- In The Beginning, Dr. Walt Brown
- Evolution: A Theory in Crisis, Michael Denton
- Darwin on Trial, Dr. Phillip Johnson
- Darwin's Black Box, Dr. Michael Behe
- Design Inference, Dr. William Dembski